

Cum Laude Bachelor of Arts Degree in Police Administration and Criminology from Indiana University of Pennsylvania in 1979, and I am a 1980 graduate of the FBI National Academy.

An Act of May 2, 1905 created the Pennsylvania State Police, the first department of its kind in the United States. The State Police was created at the request of Governor Samuel Pennypacker to deal with escalating violence of the Anthracite Coal Strikes, and a concern for the safety of the citizens of Pennsylvania. Nearly 86 years have passed, but this concern for our citizens has not diminished, the Troopers of the Pennsylvania State Police have responded repeatedly to disasters and incidents of every nature; we will continue to do so.

---

Our basic mission is to enforce the traffic and criminal laws of the Commonwealth. Our broader mandate is the protection of life and property and service to our citizens.

While the Pennsylvania State Police is perhaps most noted for its efforts in the basic traffic and criminal related programs, I will provide you with information relating to a wide range of programs and activities that our Department performs, but often goes unnoticed.

Although the following is not all inclusive, it represents our major areas of operations.

THE BUREAU OF CRIMINAL INVESTIGATION

The Bureau of Criminal Investigation provides a wide variety of law enforcement functions and related services.

- Drug Law Enforcement Division -

The Regional Drug Strike Forces conduct in-depth drug investigations. During 1989, they made 1,726 drug arrests and confiscated over \$5,300,000 in cash and assets as well as 188 vehicles. The execution of search warrants also resulted in eight clandestine laboratories being seized.

Tactical Narcotics Teams became operational in 1990 and are deployed throughout the State to assist municipal, state and federal agencies in undercover operations. The teams also perform drug interdiction investigations at airports, hotels, motels, bus and train stations.

The Violent Traffickers Project assigns Troopers to work exclusively in drug law enforcement in the City of Philadelphia. This contingent of Troopers works in conjunction with a task force of federal, state and local officers targeting violent drug traffickers in Philadelphia. Another contingent of Troopers is assigned to work exclusively in drug law enforcement with the Philadelphia City Police. During, 1989, these Troopers made 119

drug-related arrests and seized \$376,000 in cash, \$87,500 in assets, 15 vehicles, 75 pounds of cocaine, 4 pounds of crack cocaine, 16 pounds of marihuana and 2 pounds of heroin.

The Drug Law Enforcement Division was instrumental in establishing the first Pennsylvania Narcotics Officers Association (PNOA). This organization was formed to expedite the exchange and dissemination of drug-related information.

This Division is in the process of obtaining an aircraft with funds from the Pennsylvania Commission on Crime and Delinquency. It will be used exclusively for drug enforcement surveillance and will be available to provide related assistance to all Pennsylvania law enforcement agencies.

We continue to emphasize the enforcement of drug laws and are greatly assisted in this endeavor by PENNFREE Funds. These monies were the most significant factor contributing to the increased success of our drug enforcement efforts.

Our Department works closely with the Governor's Drug Policy Council to formulate, implement and evaluate state-wide strategies combatting illegal drug use.

- General Investigation Division -

The General Investigation Division provides assistance to Troop investigators, as well as responding to requests from federal, state and local law enforcement agencies in the areas of auto theft, criminal investigative assessment (psychological profile), criminal intelligence, technical operations (electronic surveillance), missing persons and child abuse.

The Auto Theft Unit, with eight enlisted members, provides investigative assistance to the various agencies involved in combating auto-theft. The Unit coordinates information and initiates major investigations throughout the State.

The Criminal Investigative Assessment Unit, with one full-time coordinator and 22 part-time criminal investigative assessors, involves identifying the personality characteristics of individuals committing violent crimes. In 1989, the Unit assessed 72 homicides, 24 sex crimes and 14 arsons. Of the 72 previously unsolved murder investigations, more than 25 have been resolved and an additional 15 are awaiting trial. An example of this program's effectiveness was recently demonstrated with the arrest of a suspect in the Appalachian Trail murders. Criminal Assessors provided vital information in this investigation.

The Intelligence Unit, with two enlisted members in Headquarters and fifteen Intelligence Officers throughout the State, responded to over 490 intelligence inquiries from federal, state and local law enforcement agencies in 1989. The Unit prepares and distributes an Intelligence Newsletter and the State Police Law Enforcement Information Bulletin. The Bulletin is disseminated quarterly to over 3,000 Commonwealth and local law enforcement agencies and to state police agencies of all 50 states.

The Technical Operations Unit provides technical and sophisticated electronic surveillance support to all Commonwealth law enforcement agencies. The Unit provides the electronic expertise to install and service court-authorized non-consensual interception and technical surveillance equipment. The Unit conducts training and certifies Pennsylvania law enforcement officers in electronic surveillance and is recognized as the premier electronic surveillance school in the United States.

The Missing Persons Unit, comprised of two enlisted members, is Pennsylvania's clearinghouse for missing children information and investigation. The Unit provides investigative support to all law enforcement agencies within the Commonwealth.

Reports of child sexual abuse in Pennsylvania have increased dramatically over the past decade. In 1989, there were 3,917 substantiated reports of sexual abuse. Of that amount, 78.1

percent were girls and 21.9 percent were boys. Acknowledging that every important problem brings with it demands for improved training and education, the Pennsylvania State Police initiated the Criminal Investigative Analysis Program. Twenty-five members were trained to conduct criminal investigative assessments on child sexual abuse offenders.

- Organized Crime Division -

The Organized Crime Division consists of Eastern and Western Task Forces. Investigative responsibilities include fraud, organized crime, white collar crime, public corruption and gambling. Targets of investigations are members of organized drug gangs, corrupt organizations, loan sharks and extortionists.

- Fire Marshal Division -

The Fire Marshal Division has 42 Fire Marshals and 68 alternates assigned to 15 Troops throughout the State. The Division is responsible for the investigation of all fires of suspicious origin, the promulgation and enforcement of regulations governing the storage and handling of flammable liquids and coordination of activities with other authorities in fire safety and investigation. In 1989, the Division investigated 1,416 incendiary fires, 853 fires of undetermined origin and 717 accidental fires, involving 111 fatalities.

The Division, in coordination with the Department of Environmental Resources and the Federal Environmental Protection Agency, is also working to enforce the Spill Protection Act. This law involves the investigation of storage tanks holding flammable/combustible liquids.

#### TROOP CRIMINAL INVESTIGATIONS

Statewide, the Department has approximately 435 full-time Criminal Investigators that are assigned to all Stations except those in Troops S, Interstate Patrol and T, Turnpike Patrol. These members routinely conduct investigations of serious crimes, including murder, kidnapping, robbery and similar type incidents. Criminal Investigators work in conjunction with and assist federal, state and local criminal justice agencies. Assistance is frequently provided to local police agencies who are often faced with complex criminal investigations that extend beyond their resources or jurisdiction. Data regarding criminal investigations and arrests is provided in Appendage A. Since 1985, criminal investigations have increased 24 percent and criminal arrests have increased 71 percent.

#### RIOT CONTROL

The Department responded to numerous riot and crowd control incidents in 1989. Some of these incidents included:

		<u>HOURS</u>
Camp Hill	October 68,931	
Prison Disturbance	November 49,031	
	December 53,984	171,946
Anticipated Graterford Disturbance		2,776
SCI Huntingdon Disturbance		134
Three Klu Klux Klan Rallies		488
Four Major Labor Strikes		785
Pigeon Shoot, Schuylkill County		66
Deer Hunt Protest		<u>30</u>
TOTAL		176,225

CRIME-RELATED PROGRAMS

Numerous special programs have been developed to address a variety of criminal activities.

The State Police established the first statewide Narcotics Analysis Referral Center. The center enables federal, state and local drug investigators to cross-index intelligence information, thus facilitating a coordinated effort in our war on drugs.

As a result of the December passage of House Bill 1141, our Department, in conjunction with the Office of Attorney General, is



now permitted to computerize law enforcement intelligence information in a central repository. This will greatly assist Criminal Investigators in quickly obtaining vital information concerning perpetrators of serious crimes. Law enforcement agencies, district attorneys and the Attorney General are now permitted access to this information.

The Clandestine Laboratory Enforcement Program provides specially trained and certified chemists and Troopers to investigate, dismantle and dispose of clandestine drug manufacturing laboratories. Eight of these sophisticated labs, each capable of producing large quantities of illegal drugs, were seized in 1989.

The Marihuana Eradication Program allows specially trained Troopers, flying with Aviation Division pilots, to identify and eradicate marihuana fields. The Drug Enforcement Administration has designated the Pennsylvania State Police as the Statewide Program Coordinator. The program incorporates the U.S. Soil Conservation Service, U.S. Agriculture Stabilization and Conservation Service, U.S. Forest Service, Department of Environmental Resources, National Guard, Civil Air Patrol, Game Commission and Fish Commission into a comprehensive statewide program. The Aviation Division devoted 310 flight hours to the Marihuana Eradication Program in 1989, resulting in the location of 140 plots of marihuana situated in 29 counties. A total of

14,683 plants were destroyed with an estimated value in excess of \$16,000,000.

Operation Whiteline is an aggressive drug interdiction program utilizing uniform patrol Troopers and the Department's canine units to identify drug couriers using the highways to transport drugs. The program is often coordinated with other eastern seaboard states. In the last six months of 1989, 294 vehicles were stopped, resulting in 23 arrests and the confiscation of 7 vehicles, \$35,200 in cash and drugs valued at over \$72,000.

The Analytical Technique for the Apprehension of Criminals (ATAC) Program determines relationships between certain violent crimes and initiates communications between investigating agencies. ATAC works in conjunction with the FBI's Violent Criminal Apprehension Program which provides the added benefit of national analysis of crimes submitted by Pennsylvania police agencies. Over 140 cases have been entered into the program. Recently, patterns have been discovered linking a number of murders of prostitutes as well as organized crime homicides.

Troop Identification Units, with 49 enlisted members, process crime scenes, preserve evidence and provide expert testimony at court proceedings. Thirteen Polygraph Operators verify the truthfulness of suspects and victims. Various Troop Auto Theft Units specialize in investigating the growing problem of stolen

vehicles and chop-shop operations. Fifteen Troop Vice Details conduct drug, prostitution, gambling and related investigations. These investigations are complex and require a variety of investigative techniques, including undercover Troopers, electronic surveillance and monitoring, etc. Because these techniques exceed the resources of many local police departments, these services are frequently provided by our Department.

#### THE BUREAU OF LIQUOR CONTROL ENFORCEMENT

The Bureau of Liquor Control Enforcement, with a complement of 143 Enforcement Officers, 15 enlisted members, 75 civilian employees and 8 attorneys, works in conjunction with other Commonwealth agencies to enforce the Pennsylvania Liquor Code and related Crimes Code Statutes. This Bureau has developed close working relationships with law enforcement agencies throughout the Commonwealth. In addition to investigating liquor violations, agents routinely uncover many other criminal violations, such as gambling, drugs and prostitution that are turned over to the police agency having jurisdiction. The Bureau has formed a special investigation section to address complex financial related investigations. Detailed auditing of licensed establishments is being initiated to determine the level of compliance with the Liquor Code. A summary of the Bureau's activities are provided in Appendage B.

## THE BUREAU OF PATROL

The Bureau of Patrol consists of three Divisions: the Aviation Division, the Patrol Services Division and the Safety Program Division. The major responsibilities of the Bureau are to aid in minimizing highway traffic accidents and related injuries and deaths, by the establishment of uniform traffic law enforcement and patrol activity programs. The Bureau provides aircraft support in field patrol operations, directs the operations of drivers' examinations and testing facilities, vehicle inspection station programs and safety programs.

### - Aviation Division -

The Aviation Division, with a complement of 26 enlisted members, provides a variety of services from 7 locations, utilizing 7 helicopters and 3 fixed-wing aircraft. During 1989, these aircraft flew 6,176 hours to complete 4,075 missions. Among these were 22 emergency transportation missions, 54 reported fires, 124 motorist assists, 381 surveillances, 383 photography missions and 778 searches. In addition, another airplane is dedicated to the Pennsylvania Turnpike for enforcement of the 55 M.P.H. speed limit.

The State Police Aerial Reconnaissance Enforcement Program (SPARE) logged 1,796 hours with 424 missions, resulting in the

issuance of 4,704 citations. Airplanes accounted for 96 percent of this activity.

- Patrol Services Division -

The Patrol Services Division develops, coordinates and directs traffic and special enforcement programs for improved highway safety with state and federal agencies. The Division also prepares and reviews proposed changes to the Vehicle Code, coordinates Department participation in the MCSAP and weight enforcement programs and supervises the serving of traffic related Warrants and O.R.'s.

During 1989, the Pennsylvania State Police made 418,737 traffic arrests for violations of the Pennsylvania Vehicle Code. A breakdown of major violations is as follows:

Speeding . . . . .	243,128
Reckless Driving . . . . .	6,229
Failure to keep to the Right . . . . .	4,473
Stop Sign . . . . .	14,994
Child Passenger Protection . . . . .	1,118
Seat Belts . . . . .	2,604
All Others . . . . .	146,191
TOTAL . . . . .	418,737

Since 1980, the Pennsylvania State Police have steadily increased enforcement of DUI-related offenses. In 1989, there were 7,541 arrests for DUI, a 20 percent increase over 1988. In the 10 years from 1980 to and including 1989, the Department has increased its DUI arrests from 1,669 to 7,541, a 350 percent increase.

Operation S.T.E.A.D.-D. was initiated in August of 1988 to combat drunken driving. For the 1 year period from August 1988 until July 1989, the S.T.E.A.D.-D Teams made 3,142 traffic arrests. Of this total, 504 were DUI and 1,687 were speeding citations. Additionally, all categories of accidents were reduced from the previous year. DUI-related accidents were down 30 percent, DUI fatal accidents were down 29 percent and DUI injury accidents were down 22 percent.

The Combined Accident Reduction Effort (C.A.R.E.) is a national program of highway patrol and enforcement, committed to the goal of accident reduction. This goal is accomplished by strict enforcement of alcohol-related and speeding offenses. Emphasis is also placed on seat belt use and enforcement of other accident causing violations.

Initiated and coordinated by the Pennsylvania State Police, Eight STEPS involves participation with the state police agencies and the highway patrol agency that border Pennsylvania. The program is designed to provide saturation patrol coverage along

specified interstate highways of the eight participating state borders. Radar teams, marked and unmarked patrol vehicles, aerial observation and officers in civilian attire were utilized in traffic safety efforts aimed at accident reduction.

The Pennsylvania State Police participation in the Motor Carrier Safety Assistance Program (MCSAP) has grown since its inception in 1985. Currently, the Department has over 356 certified Motor Carrier Inspectors (MCIs). In 1989, the Department's MCIs performed over 34,000 of the 48,929 inspections completed along Pennsylvania highways. As a result of those inspections, 27,544 Traffic Citations and 93,604 Police Warning Notices were issued.

The Commercial Vehicle Weight Enforcement Program is comprised of 29 mobile teams and 1 permanent detail. The teams work throughout the State weighing commercial vehicles. In 1989, 509,663 commercial vehicles were stopped and checked. Of that number, 432,857 were weighed and 5,997 were cited.

In 1989, approximately 67,533 hours were devoted to PennDOT related warrant and O.R. activities. These included the seizing of expired or suspended drivers' licenses and registrations as well as verifying that motorists had vehicle insurance. Approximately 51,000 hours were spent on the service of warrants. A large

percentage of these warrants involved members collecting fines for outstanding traffic violations.

The Motorcycle Patrol Program was placed in operation on August 17, 1989. The Motorcycles are assigned within densely traveled highway systems to augment the existing patrol units in these high volume traffic areas. There are 21 trained motorcycle operators utilizing 12 Harley-Davidson motorcycles.

- Safety Program Division -

The Safety Program Division is responsible for coordinating the regulatory aspects of Department participation in the State Traffic Safety Program. The Division also oversees the vehicle inspection station program, the school bus safety program and the operation of driver examination and facilities.

The Driver Licensing Program maintains responsibility for the testing of all operators of motor vehicles for the Commonwealth. This includes both knowledge tests of the related Vehicle Code laws and a demonstration of driving skills. In 1989, over 1,446,000 tests involving 86,245 hours, were administered. A federally mandated Commercial Driver License Testing Program is presently administered by the Department. Through the program, the 1.2 million commercially licensed operators in Pennsylvania will have to be recertified prior to April, 1992. The program required the



hiring of 25 additional Driver License Examiners and more will be needed in the near future.

The Safety Program Division supervises the Inspection Station Supervisor Program activities. Approximately 72 enlisted members are involved in this function full-time. During 1989, Inspection Station Supervisors routinely visited and audited 18,500 inspection stations. A total of 792 reports of violations were submitted which resulted in 190 mechanics and 124 inspection stations being suspended. In addition, 3,370 dealer-related investigations were conducted.

In 1989, the Pennsylvania State Police inspected 20,500 school buses. Statewide training on school bus regulations was also provided to the 175 members of the Pennsylvania State Police who are involved in the annual inspection program.

The Bureau of Patrol also provides a variety of other traffic related programs.

As part of the Governor's Highway Safety Initiative, TRASHNET was established to enforce overweight and illegal garbage hauling. This program combines our Troopers and the Department of Environmental Resources (DER) in targeting garbage hauling.

Backhauling enforcement has also been instituted with DER. Trucks are inspected to uncover operators that haul food products in vehicles that previously carried garbage.

Operation Co-Flame involves the participation of states along the east coast to enforce drug enforcement on major highways between Florida and Maine.

Other programs that include the cooperation of other police agencies include: P.L.E.A.S.E. (Pennsylvania Law Enforcement Safety Effort) that combines our Department and local police for traffic safety and SPIES (State Police Interstate Enforcement System) designed to impact on speeding on interstate highways.

Our Department has initiated a number of programs designed to encourage the use of safety belts for adults and children. A pilot program conducted in Erie County involving public education and enforcement resulted in increased seat belt usage.

The Bureau of Patrol works closely with the Governor's Highway Safety Representative at PennDOT to acquire Federal funds. These monies support special projects, allowing for increased enforcement and the purchase of related equipment.

## THE BUREAU OF COMMUNITY SERVICES

The Bureau of Community Services coordinates the Department's efforts in working with the community to reduce crime. The Bureau oversees the activities of approximately 56 Community Relations/Youth Aid and Safety Education Officers stationed throughout 15 Troops. These officers are responsible for providing community relations, crime prevention and youth-related programs to the public. During 1989, 1,984 programs were presented to over 41,156 adults and 57,964 youths.

Approximately 230 enlisted members have received training from the Pennsylvania Commission on Crime and Delinquency as Crime Prevention Officers. The Community Relations and Crime Prevention Officers develop and maintain Neighborhood Watch and Utility Watch Programs. As of December 1989, there were approximately 130 programs in operation with over 11,992 citizens participating.

The Pennsylvania Crime Stoppers Program, with a staff of 3 enlisted members, combines the public, media and police in a cooperative effort to fight crime. Since the inception of the program, a total of 705 serious crimes were solved, 205 criminals were arrested, 154 fugitives were captured. Over \$2,309,837 in stolen property and illegal drugs were recovered.

THE BUREAU OF LABORATORY AND COMMUNICATIONS SERVICES

The Laboratory Division of the Bureau of Laboratory and Communications Services operates a system of 6 laboratories to provide forensic services to state and local law enforcement agencies. These services are provided by a staff of 79, consisting of 16 enlisted members and 63 civilian employees, including analysts, laboratory technicians, clerical and administrative personnel.

- Laboratory Division -

In 1989, the Laboratory Division established a Deoxyribonucleic Acid (DNA) laboratory. This technology will provide advanced scientific technology to support the investigative needs of law enforcement. DNA analysis will link the perpetrators of crimes to biological evidence and permit investigators to identify a series of crimes committed by the same person. It will also aid in the identification of missing persons and the remains of unidentified deceased individuals.

Scientific examinations and analyses of physical evidence are conducted by the Ballistics, Chemistry, Documents and Latent Print Sections of the Laboratory Division. In 1989, this Division completed over 27,800 cases. This represents nearly a 19 percent increase over the previous year. Of that amount, approximately

19,600 cases were completed free of charge for municipal law enforcement agencies.

THE BUREAU OF RECORDS AND INFORMATION SERVICES

The Bureau of Records and Information Services, comprised of the Information Systems Division and the Records and Identification Division, is a support and service group for all criminal justice agencies in the Commonwealth. The Bureau has a complement of 20 enlisted members and 204 civilian employees.

An Automated Fingerprint Identification System (AFIS) was initiated in 1989. This \$7.2 million dollar project involves 8 enlisted members and 18 civilian employees. The computer-based system utilizes optical disk technology to read, classify, match and store fingerprints. Without AFIS, a manual search for a match to a latent fingerprint from among the 1.5 million fingerprint cards on file in the Central Repository would conceivably take 35 years to complete. AFIS can accomplish the same search in approximately 30 minutes.

- Information Systems Division -

The Information Systems Division provides automated communication technology for the Department. Data communications and informational resources extend to law enforcement and criminal

justice communities nationwide, via the Commonwealth Law Enforcement Assistance Network (CLEAN). The CLEAN Program provides computer access to the National Crime Information Center, the National Law Enforcement Telecommunications System, the Philadelphia Police Department and PennDOT.

- Records and Identification Division -

The Records and Identification Division maintains traffic, criminal and administrative records of the Department and functions as the Central Repository for all state law enforcement agencies for the classifying, identifying and storing of arrest fingerprint cards. The arrest fingerprints are the basis for the generation of Computerized Criminal Histories.

THE BUREAU OF TRAINING AND EDUCATION

The Bureau of Training and Education, with a staff of 56 enlisted members, provides a wide variety of programs and initiatives relating to crime reduction.

During 1989, this Bureau completed training 18 Canine Drug Enforcement teams. The teams responded to over 1,600 incidents resulting in the confiscation of over \$9,000,000 in drugs, cash, vehicles and other property. The seized cash alone totaled \$1,836,965.

The Special Emergency Response Team (SERT) is comprised of a total of 38 enlisted members, 24 tactical and 14 negotiators, who perform their function on a part-time basis. SERT was activated 36 times during 1989 for hostage situations, barricaded gunmen incidents and high-risk search and arrest warrants. Members of SERT also saw extensive duty at the Camp Hill Prison incident.

The Bureau is responsible for the initial 23 weeks of Cadet training, Basic Municipal Police Officer training, Basic Liquor Control Enforcement Officer training, in-service training for Pennsylvania State Police personnel and in-service training for municipal police personnel. In 1989, the Academy and the 4 Training centers provided basic training for 286 municipal police officers. Additionally, 1,374 municipal police officers and 981 State Police personnel received in-service training. In-Service training for our members included a wide variety of subjects. Some of these include:

- The Survival Tactics Training Program
- Preliminary Crime Investigation
- Offenses Against Children
- The Juvenile Offender
- Hostage Situations
- Drug Awareness and Clandestine Laboratories
- Criminal Investigators Course
- Criminal Law Review
- Criminal Activity and Satanism
- Criminal Homicide Investigation
- Case Preparation/Testifying in Court
- Crime Scene Management
- Auto Theft
- Hazardous Materials Identification and Handling
- Accident Reconstruction

The Bureau of Training and Education and the four regional training centers also offer instruction in topics such as management decision making, performance evaluations, stress reduction and first line supervision.

#### SUPPORT SERVICES

The Pennsylvania State Police maintains an Emergency Operations Officer to coordinate activities with the Pennsylvania Emergency Management Agency (PEMA). Regular meetings prepare emergency operation plans for man-made or natural disasters. As a result of this cooperation, an agreement has been made with the Department of Corrections addressing future prison emergencies.

The Commissioner of the Pennsylvania State Police is the Chairman of the Municipal Police Officers' Education and Training Commission. This Commission is mandated to establish requirements and types of training utilized for municipal police officers. All political subdivisions of the Commonwealth maintaining local police agencies must comply with these established provisions.

It is important for us to maintain a position of leadership in the law enforcement community. In furtherance of this effort membership is maintained in professional organizations such as Pennsylvania Chiefs of Police Association, International Association of Chiefs of Police, Pennsylvania Narcotics Officers



Association, National Air Smuggler's Association, Alliance of State Drug Enforcement Agencies and the Mid-Atlantic Compact on Alcohol and Drug Abuse.

#### DEPARTMENT INITIATIVES

Administration of our Department is constantly upgraded by a number of initiatives involving our personnel. Some of these include:

Training by Affirmative Action Officer of field rank and file/supervisory personnel in elements of sexual harassment/ethnic intimidation.

Executive Development Training of our management personnel in management of human resources.

Basic Supervisory Training for all first line supervisors in supervisory development, performance evaluations and grievance/discipline handling.

Development of a two day in-service stress management program for all personnel to begin in 1991.

Improved labor/management relations through labor/management meetings between the Pennsylvania State Trooper Association

and the Commissioner, Deputy Commissioner of Administration and Troop Commanders.

Finalization of new grievance procedures on contractual matters, including discipline, and subsequent training of Department management personnel.

Continued progress towards validation of promotional procedures for the ranks of Corporal, Sergeant and Lieutenant.

Validation of Cadet selection procedures.

Reorganization of the Executive and Administrative Offices and the Area Commands.

---

#### ECONOMIC FACTORS

There are additional economic factors affecting the operation of the Department. The economic climate being experienced by various municipalities in Pennsylvania has resulted in either a disbanding or reduction in size of numerous municipal police departments. The Pennsylvania State Police is mandated by law to assist those municipalities in providing police coverage. Since January 1, 1986, we have had to assume full-time police responsibility for 58 municipalities and part-time police

responsibility for 57 municipalities involving in excess of 313,000 people.

- MISCELLANEOUS -

The number of registered motor vehicles in Pennsylvania has been steadily increasing as is the number of miles driven on Commonwealth highways. This has a significant impact on Pennsylvania State Police operations as the Department is mandated to supervise motor vehicle inspections, administer driver examinations and enforce traffic laws. The Pennsylvania State Police has the primary responsibility for patrolling the Commonwealth's interstate highway system and it is anticipated that activity levels will increase as the volume of traffic and the miles driven on the highway system increase.

The large increase in the number of registered motor vehicles and miles traveled corresponds with a substantial increase in the number of motor vehicle accidents requiring investigation by the Pennsylvania State Police. Projections of accident rates indicate that the number of accidents investigated by this Department will continue to steadily increase.

It should be mentioned that many of our Troopers perform more than one function and are called upon for a variety of tasks. Many of these functions are completed by Patrol Troopers in addition to

their regular patrol duties. Some of these activities include: First Aid and Cardiopulmonary Resuscitation Instructor, Equitation Officers, Firearms Instructors, Intoxilyzer Operators, Computer Coordinators and Communications Specialists.

I would like to emphasize that the Pennsylvania State Police dedicates substantial resources to a wide spectrum of law enforcement activities. The impressive results speak for themselves. We are proud to provide these vital services that are not available elsewhere to the citizens of the Commonwealth.

My staff and I are prepared to answer any questions you may have regarding the duties I have described.

Again, I thank you for your invitation to address this Committee. You can be assured of the support of the Pennsylvania State Police to assist you in any way possible.

## APPENDAGE A

## CRIMINAL INVESTIGATIONS

OFFENSE	YEAR				
	1985	1986	1987	1988	1989
Criminal					
Homicide	100	87	94	95	84
Forcible					
Rape	388	400	420	461	485
Robbery	366	392	390	419	390
Assault	7,908	10,014	10,680	11,010	12,444
Burglary	5,478	15,525	15,104	14,747	15,200
Larceny-Theft	16,533	17,327	17,619	17,675	18,424
Motor Vehicle					
Theft	3,139	3,157	3,181	3,227	3,594
Arson	919	1,007	975	939	1,088
Forgery	556	606	745	701	671
Fraud	1,246	1,401	1,471	2,167	1,610
Embezzlement	130	78	52	86	47
Stolen Property	463	528	548	597	556
Vandalism	14,359	16,699	17,097	18,174	17,838
Weapons	201	242	269	319	305
Prostitution &					
Vice	124	51	76	81	144
Sex Offenses	1,148	1,206	1,286	1,228	1,320
Drug Abuse	2,305	2,312	2,798	2,927	2,857
Gambling	323	381	532	630	681
Offenses Against					
Family & Children	89	143	101	123	135
Driving Under					
the Influence	4,287	4,371	4,600	6,117	7,326
Liquor Laws	3,721	4,637	4,678	4,876	4,463
Drunkenness	663	724	879	935	1,156
Disorderly					
Conduct	4,093	4,691	5,563	6,795	7,830
Vagrancy	175	236	278	264	240
All other					
offenses	6,635	7,352	7,498	7,894	8,113
TOTAL	85,349	93,567	96,934	102,487	107,001

CRIMINAL ARRESTS  
(Includes Juvenile Arrests)

OFFENSE	YEAR				
	1985	1986	1987	1988	1989
Criminal					
Homicide	91	79	98	83	86
Forcible					
Rape	181	169	186	208	243
Robbery	203	189	164	256	169
Assault	3,452	4,697	5,280	6,061	7,134
Burglary	2,922	2,722	2,827	2,807	2,822
Larceny-Theft	3,260	3,482	3,630	3,593	3,942
Motor Vehicle					
Theft	579	588	651	674	706
Arson	167	190	200	222	205
Forgery	225	320	371	309	350
Fraud	509	531	604	646	756
Embezzlement	25	32	32	37	30
Stolen Property	415	490	569	575	581
Vandalism	3,187	3,299	3,722	3,983	4,439
Weapons	167	166	187	229	218
Prostitution &					
Vice	120	39	81	63	150
Sex Offenses	539	532	553	548	563
Drug Abuse	1,823	1,724	2,177	2,210	2,181
Gambling	182	243	199	207	409
Offenses Against					
Family & Children	41	60	53	48	57
Driving Under					
the Influence	4,300	4,439	4,868	6,127	7,331
Liquor Laws	5,357	6,656	6,840	6,835	6,025
Drunkenness	709	794	973	1,061	1,217
Disorderly					
Conduct	2,273	2,852	3,451	4,705	5,476
Vagrancy	16	35	58	24	33
All other					
offenses	4,286	4,597	5,138	5,417	5,251
TOTAL	35,029	38,925	42,912	46,928	50,374

JUVENILE ARRESTS

OFFENSE	YEAR				
	1985	1986	1987	1988	1989
Criminal					
Homicide	2	4	8	4	7
Forcible					
Rape	30	26	31	36	40
Robbery	35	27	34	59	26
Assault	775	877	917	891	1,073
Burglary	1,339	1,292	1,253	1,238	1,376
Larceny-Theft	1,292	1,401	1,437	1,407	1,517
Motor Vehicle					
Theft	279	302	360	354	358
Arson	76	73	68	76	73
Forgery	33	39	36	39	50
Fraud	24	48	36	58	54
Embezzlement	-	-	-	-	1
Stolen Property	82	114	89	118	133
Vandalism	1,381	359	1,569	1,627	1,993
Weapons	18	20	21	47	41
Prostitution &					
Vice	8	1	2	2	4
Sex Offenses	131	128	156	126	151
Drug Abuse	220	191	174	187	165
Gambling	-	-	-	-	3
Offenses Against					
Family & Children	2	12	2	1	2
Driving Under					
the Influence	53	59	77	93	94
Liquor Laws	1,823	2,510	2,376	2,378	1,983
Drunkenness	16	15	21	33	38
Disorderly					
Conduct	407	545	639	874	926
Vagrancy	6	12	30	6	17
All other					
offenses	2,419	2,505	2,736	2,822	2,511
TOTAL	10,451	11,560	12,072	12,476	12,636

Appendage B

Bureau of Liquor Control Enforcement

1989 Activity

Complaints Received at the District Enforcement Offices	8,646
Number of Licensed Establishments Checked	27,336
Licensed Establishments Cited for Violation of Liquor Laws	2,738
Number of Minors Arrested for Underage Consumption	3,999
Number of Adults Arrested for Furnishing Alcohol to Minors	166
Number of Arrests for Sales Without a License (Speakeasy)	196
Number of Arrests Associated with Border Patrol	290
Number of Arrests by Other Agencies - BLCE Assist	859
Number of Other Criminal Arrests	192
Total Arrests	5,702
Number of Personal Warnings	849
Alcohol Seized:	
Liquor	4,474 Liters
Beer	11,943 Liters
Wine	5,603 Liters



Pennsylvania State Police  
1989-90 Expenditures

(Dollar Amounts in Thousands)

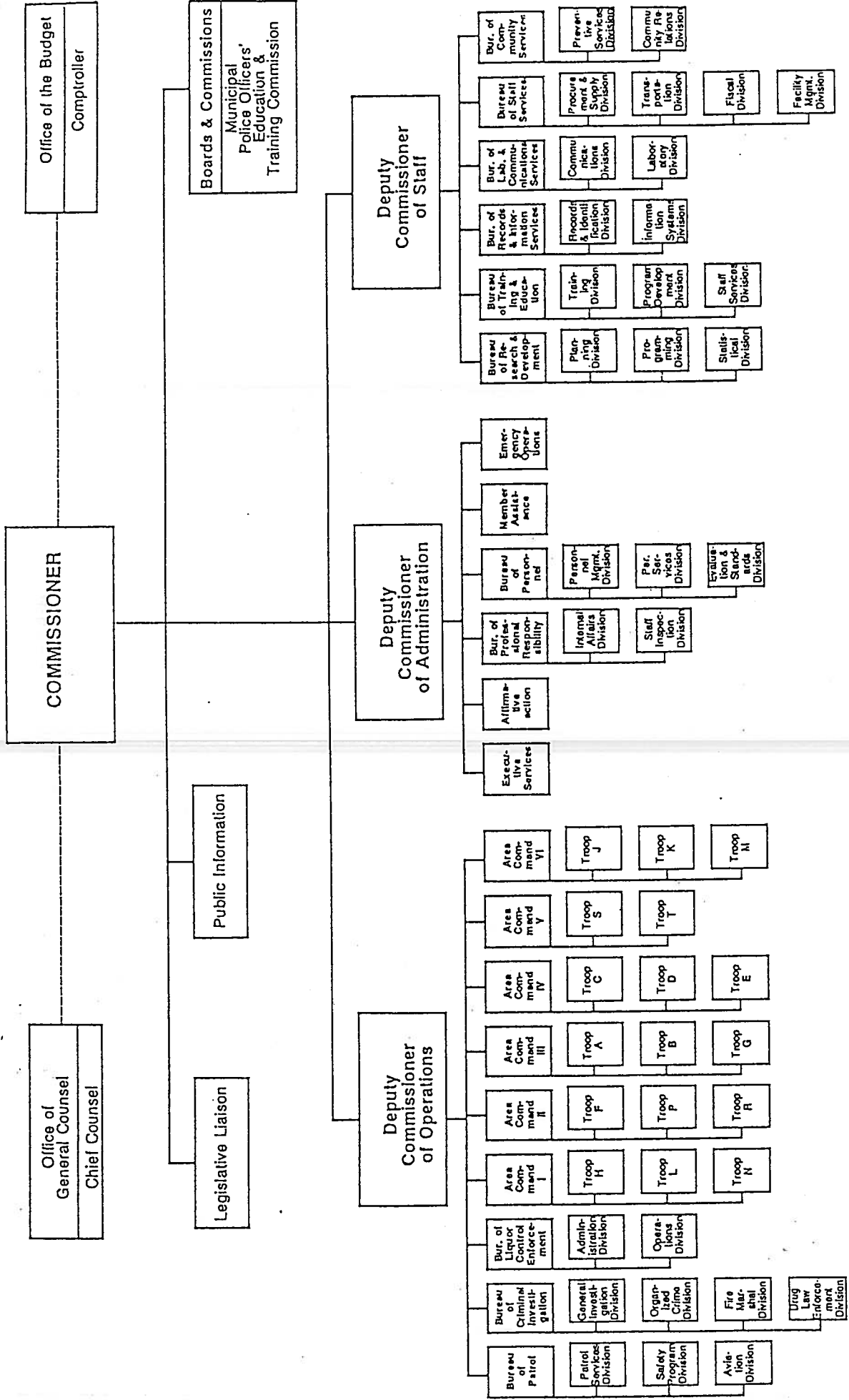
	General Govt Operations (181)	Mun. Police Training (102)	Patrol Vehicles (104)	AFIS (120)	Mobile Narc. Teams (121)	Local Drug Law Enf. (301)	Drug Law Enf. (302)	CDL (196)	LCE (171)	Total
<b>Total Costs</b>										
Personnel	249,316	329			710			248	9,748	260,351
Operating	31,078	221		530	68		65	177	1,612	33,751
Fixed Assets	3,111	72	6,371	330	1,169		493	36	151	11,733
Grants and Subsidies		5,127				1,000	490			6,617
<b>Total</b>	<b>283,505</b>	<b>5,749</b>	<b>6,371</b>	<b>860</b>	<b>1,947</b>	<b>1,000</b>	<b>1,048</b>	<b>461</b>	<b>11,511</b>	<b>312,452</b>
<b>Field Operations - Crime</b>										
Personnel	59,154									59,154
Operating	5,161									5,161
Fixed Assets	109									109
<b>Total</b>	<b>64,424</b>									<b>64,424</b>
<b>Field Operations - Patrol</b>										
Personnel	120,100									120,100
Operating	10,478									10,478
Fixed Assets	220									220
<b>Total</b>	<b>130,798</b>									<b>130,798</b>
<b>Drug Law Enforcement</b>										
Personnel	5,123				710					5,833
Operating	137				68		65			270
Fixed Assets	2				1,169		493			1,664
Grants and Subsidies						1,000	490			1,490
<b>Total</b>	<b>5,262</b>				<b>1,947</b>	<b>1,000</b>	<b>1,048</b>			<b>9,257</b>







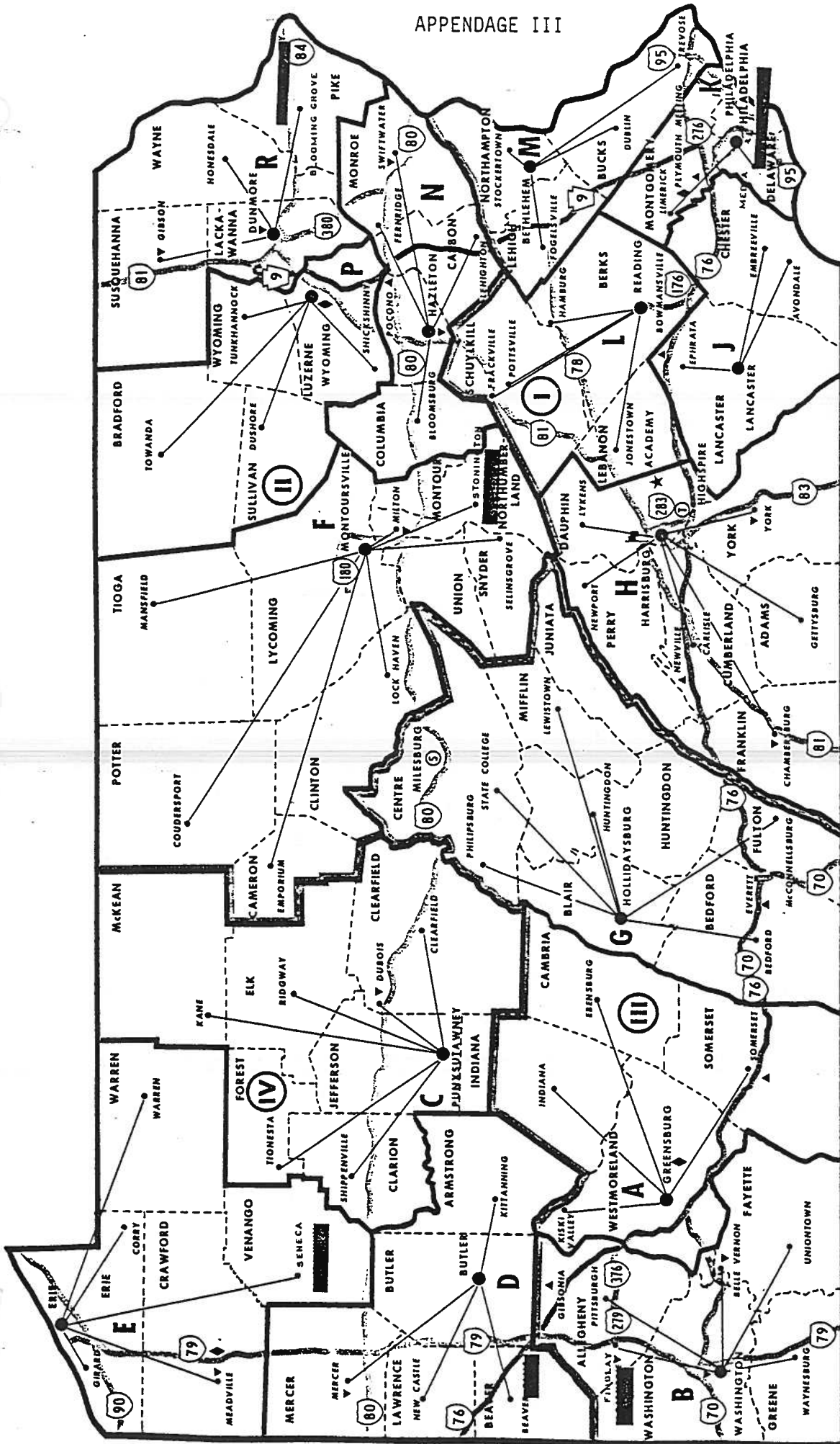
# PENNSYLVANIA STATE POLICE



# PENNSYLVANIA STATE POLICE LOCATION MAP

APPENDAGE III

AR 1-1  
5/20/87



- ### LEGEND
- Ⓜ SAT TROOP HEADQUARTERS
  - Ⓜ - INTERSTATE
  - Ⓜ -PA. TURNPIKE
  - ▼ TROOP 'S' STATIONS
  - ▲ TROOP 'T' STATIONS
  - Ⓜ DEPARTMENT HEADQUARTERS
  - TROOP HEADQUARTERS
  - STATIONS
  - ★ ACADEMY
  - ◆ REGIONAL TRAINING CENTERS
  - Ⓜ AREA DESIGNATIONS
  - AREA BOUNDARIES
  - TROOP BOUNDARIES
  - INTERSTATE ROUTES
  - TURNPIKE