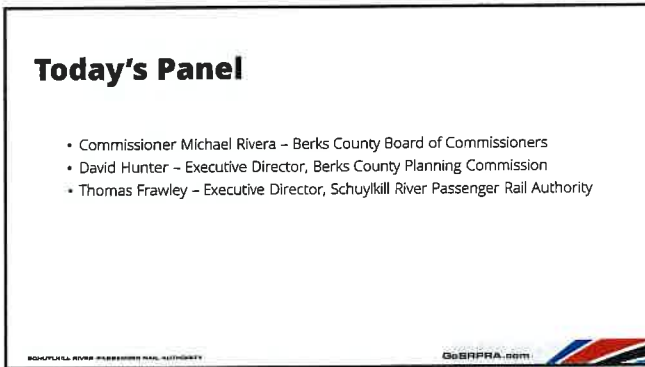
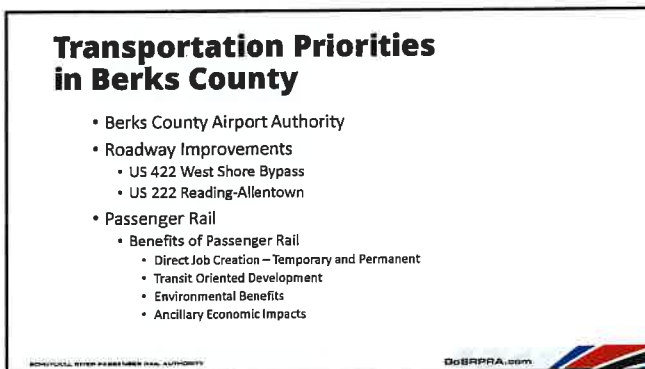


1



2



3

Reading-Philadelphia Passenger Rail History

- Philadelphia & Reading Rail Road founded April 4, 1833 to haul coal between Pottsville, Reading and Philadelphia.
- Passenger rail volumes reach record levels during World War II.
- Service shrinks to peak-period-only schedule in the 1960s.
- SEPTA assumes responsibility in 1976.
- SEPTA suspends service in 1981.
- Schuylkill River Metro light rail transit project cancelled in 2006; NS studied heavy rail alternative in 2005.
- Recent studies prepared by PennDOT (2020) and the Berks Alliance and the Greater Reading Chamber Alliance (2020)

SCHUYLLKILL RIVER PASSENGER RAIL AUTHORITY GoSRPRA.com

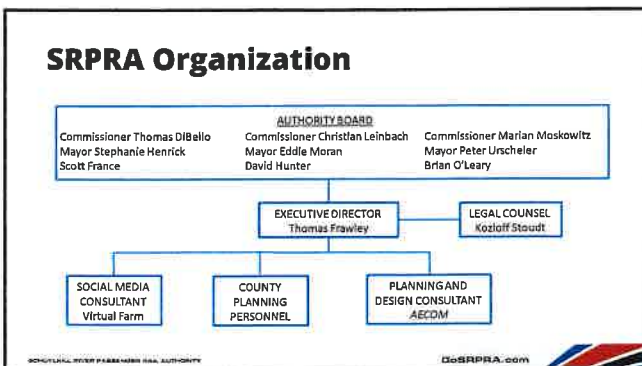
4

SRPRA - A New Agency

- Committee formed in 2021 by Berks, Montgomery and Chester Counties.
- Authority incorporated June 16, 2022
- Hired Executive Director in September 2022
- Submitted FRA CIDP application in March 2023
- Accepted by FRA into CIDP December 8, 2023
- Selected AECOM as planning and design consultant in December 2023
- FRA grant funds for CIDP Step 1 obligated, and Step 1 work initiated in March 2024

SCHUYLLKILL RIVER PASSENGER RAIL AUTHORITY GoSRPRA.com

5



6

Federal Railroad Administration CIDP

- Federal Railroad Administration (FRA) is part of US Department of Transportation (USDOT).
- The pathway for all intercity passenger rail corridor projects is the FRA Corridor Identification and Development Program (CIDP).
- Program created as part of the Infrastructure Investment and Jobs Act (IIJA), aka the Bi-partisan Infrastructure Law, on November 15, 2021.
- SRPRA submitted Expression of Interest in July 2022 and application in March 2023, and was accepted into CIDP on December 8, 2023.
- CIDP Step 1 work was initiated March 1, 2024 and is anticipated to be completed by the end of September 2024.

SHOULD ONLY BE USED FOR FEDERAL RAIL AUTHORITY

GoSRPRA.com



7

FRA CIDP Includes 3 Steps

PROGRAM PHASE	MATCH
Step 1: Develop Scope, Schedule and Cost Estimate to Prepare Service Development Plan (SDP)	Up to \$500k with No Match Required
Step 2: Prepare Service Development Plan	No Ceiling Identified; 10% Match Required
Step 3: Engineering and Design (30%)	No Ceiling Identified; 20% Match Required

SRPRA acceptance into CIDP includes Step 1 funding.

SHOULD ONLY BE USED FOR FEDERAL RAIL AUTHORITY

GoSRPRA.com



8

FRA CIDP Step 1

- Project Management Plan (PMP) to address:
 - Project management team roles and responsibilities
 - Processes and procedures for maintenance of schedule and budget
 - Compliance with federal reporting requirements
- Review Previous Studies to Identify Useable Materials for Service Development Plan
- Scoping Tasks to Prepare CIDP Step 2:
 - Statement of Work
 - Schedule
 - Budget

SHOULD ONLY BE USED FOR FEDERAL RAIL AUTHORITY

GoSRPRA.com



9

FRA CIDP Step 2


- Create Service Development Plan (SDP) consisting of:
 - Formal Project Goals and Objectives / Statement of Purpose and Need
 - Identification and Evaluation of Alternatives
 - Ridership and Revenue Forecasts
 - Operational Analysis
 - Station and Access Analysis
 - Conceptual Engineering and Capital Programming
 - O&M Costs and Capital Replacement Forecasts / Financial Plan
 - Long-Term Governance Plan
 - Public Benefits Analysis

REGIONAL RAIL PASSENGER RAIL AUTHORITY GoSRPRA.com

10

FRA CIDP Step 3

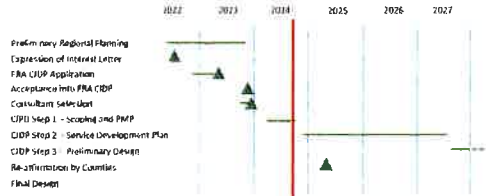
- Preliminary Design and Engineering (30%)
 - Track
 - Tunnels
 - Stations
 - Signals and PTC
- NEPA (National Environmental Protection Act) documentation
 - Categorical Exclusion
 - Selected analyses still required, including air quality impacts, traffic impacts, historic resources, and others



REGIONAL RAIL PASSENGER RAIL AUTHORITY GoSRPRA.com

11

SRPRA Project Timeline



REGIONAL RAIL PASSENGER RAIL AUTHORITY GoSRPRA.com

12

SRPRA Project Status

- Nearing Completion of CIDP Step 1
 - Completed Project Management Plan (Approved April 8, 2024)
 - Completed Gap Analysis (Approved June 3, 2024)
 - Final Draft Step 2 Statement of Work (Submitted to FRA September 6, 2024)
 - Final Draft Step 2 Schedule (Submitted to FRA September 6, 2024)
 - Draft Step 2 Budget (Scheduled for submission by September 13)
- Starting CIDP Step 2 (Service Development Plan) around December 2024
 - Separate FRA CIDP Grant Agreement
 - Amend AECOM Consulting Agreement
 - Execute necessary non-disclosure agreements with host railroads

SENYUTRAIL RIVER PASSenger RAIL AUTHORITY GoSRPRA.com

13

SRPRA Plan - A Phased Approach

- Phase 1: Reading - Philadelphia Segment
 - Between four and six daily rail round-trips initially
 - Approximately eight or ten or more daily rail round-trips as ridership grows
 - Integration of Amtrak Thruway Bus service to complement rail
- Phase 2: Reading - Philadelphia - New York One-Seat Ride
 - Requires completion of Gateway Projects in New York (c2035)
 - Requires delivery of new Amtrak rolling stock
- Beyond Phase 2: Long-Term Possibilities
 - Harrisburg - Connection with PennDOT Keystone/Pennsylvanian
 - Allentown - Connection to Lehigh Valley and beyond

SENYUTRAIL RIVER PASSenger RAIL AUTHORITY GoSRPRA.com

14

SRPRA Plan - A Phased Approach

The map illustrates the SRPRA plan with three main phases:

- Phase 1 (Blue line):** Reading to Philadelphia via Pottsville and Pottersville.
- Phase 2 (Green line):** Philadelphia to New York via Trenton.
- Phase 3 (Yellow line):** Allentown to Philadelphia via Lehigh Valley.

 A legend at the bottom left defines symbols for stations, routes, and other project details. The text 'NOT TO SCALE' is located at the bottom right of the map area.

SENYUTRAIL RIVER PASSenger RAIL AUTHORITY GoSRPRA.com

15

Funding - Secured

- CIDP funding will support completion of the SDP (Step 2) and Preliminary Design/ Environmental Documentation (Step 3) but will require state and/or local match.
- Pennsylvania LSA Grant: \$250k to Montgomery County
 - No match requirement
 - Can be used as match for federal funding in CIDP Steps 2 and 3
- Congressionally Mandated Grant: \$750k to Berks County through FRA
 - No match requirement
 - Cannot be used as match for other federal funding
 - Planned to be used for final design and/or construction

REGIONAL RAIL AUTHORITY

GoRRPA.com



16

Funding - Future

- CIDP Step 3 will require 20% matching funds
- Final Design is post-CIDP and would require additional federal funds and local matching funds, currently anticipated to be 20%.
- Potential Federal Funding Sources
 - Federal-State Partnership for Intercity Passenger Rail Grant Program
 - Consolidated Rail Infrastructure and Safety Improvements (CRISI) Program
 - Passenger Rail Restoration and Enhancement Grant Program
 - Other grant programs
 - Additional Congressionally Directed Spending
- Potential State Funding sources include additional LSA Grant

REGIONAL RAIL AUTHORITY

GoRRPA.com



17

Next Steps – Community Involvement

- Outreach spans Railroads, Agencies / Municipalities, and the Public.
- Outreach in Berks County is expanding with advancement into Step 2.
 - Efforts to-date focused on Reading City Council, City Administration, and stakeholder groups in Reading and the surrounding communities.
 - Future efforts will expand to include direct public involvement through information sharing and in-person meetings and open-houses.
 - Underrepresented populations and environmental justice communities will be particularly important in shaping the outreach efforts.
 - Smaller communities in the Reading – Philadelphia corridor will be directly included in expanded outreach efforts.

REGIONAL RAIL AUTHORITY

GoRRPA.com



18

Next Steps - Near Term Priorities

- Complete FRA CIDP Step 1 and advance into Step 2
- Formalize relationships with host railroads Norfolk Southern, and either CSXT or SEPTA depending upon alignment selected
- Formalize relationship with proposed operator Amtrak
- Advance financial planning including applications for additional federal and state funding for final design and construction
- Advance institutional planning regarding long term governance.
- Continue coordination with Reading, Pottstown and Phoenixville regarding station planning and design efforts

SCHUYLKILL RIVER PASSENGER RAIL AUTHORITY

GoSRPRA.com



19

Thank You for your Attention!

SCHUYLKILL RIVER PASSENGER RAIL AUTHORITY

GoSRPRA.com



20

Contact Information

SCHUYLKILL RIVER PASSENGER RAIL AUTHORITY
 633 Court Street
 Reading, PA 19601

(610) 860-6600 (Main)

Info@GoSRPRA.com

www.GoSRPRA.com

SCHUYLKILL RIVER PASSENGER RAIL AUTHORITY

GoSRPRA.com



21
